

# **East Anglia TWO Offshore Windfarm**

## **Appendix 26.18**

### **Proposed Preliminary Access Concepts**

#### **Environmental Statement Volume 3**

Applicant: East Anglia TWO Limited  
Document Reference: 6.3.26.18  
SPR Reference: EA2-DWF-ENV-REP-IBR-000918\_018 Rev 01  
Pursuant to APFP Regulation: 5(2)(a)

Author: Royal HaskoningDHV  
Date: October 2019  
Revision: Version 1

**This page is intentionally blank**

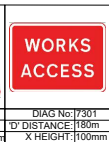
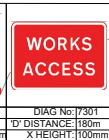
DRAWING No.  
TP-PB4842-DR001



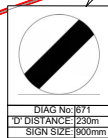
VISIBILITY DETAILS  
SCALE - 1:2000



ACCESS DETAILS  
SCALE - 1:500



ACCESS 1

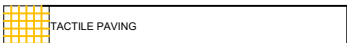


#### NOTES

- Do not scale from this drawing. all dimensions are in metres unless noted otherwise.
- This drawing has been based upon Ordnance Survey Maps and Royal HaskoningDHV can not guarantee the accuracy of data.
- All road markings and signage to conform with the 'Traffic Signs Regulation and General Directions 2016 and Chapter 6.
- 'D' distance is the siting distance of temporary road signs from the closest haul road crossing point/access location.
- 'X' distance - the set back from the nearest edge of the carriageway from which the access will be taken
- 'Y' distance - the SSD measured along the nearest edge of the carriageway to its intersection with the centreline of the access.
- 'SSD' - Stopping Sight Distance for design speed of the road.
- All vegetation to be cleared/trimmed within identified visibility envelope.

#### KEY

- ORDER LIMITS
- PROPOSED EXTENDED CYCLEWAY
- PROPOSED ACCESS BOUNDARY/ROAD MARKINGS
- VISIBILITY SPLAY (SEE VISIBILITY TABLE)
- PROPOSED TEMPORARY ROAD SIGN



ACCESS 1 - SIZEWELL GAP		VISIBILITY	
Posted Speed Limit (PSL) (mph)		EAST	WEST
Required Y-distance SSD for PSL (m)		60	215
Required Y-distance SSD achievable?		Yes	Yes
85 <sup>th</sup> percentile speed (mph)		57.1	

D0.6	24.07.19	PAGE SIZE CHANGED FROM A3 TO A1	JL	SKT	SKT
D0.5	07.06.19	ORDER LIMITS, ACCESS LOCATION UPDATED	JL	SKT	SKT
D0.4	11.04.19	ACCESS LOCATION AMENDED	JL	SKT	SKT
D0.3	11.04.19	ACCESS LOCATION AMENDED	JL	SKT	SKT
D0.2	16.11.18	ORDER LIMITS UPDATED	JL	SKT	ADR
D.01		FIRST ISSUE			
REV	DATE	DESCRIPTION	BY	CHK	APP

#### REVISIONS

#### CLIENT



#### PROJECT

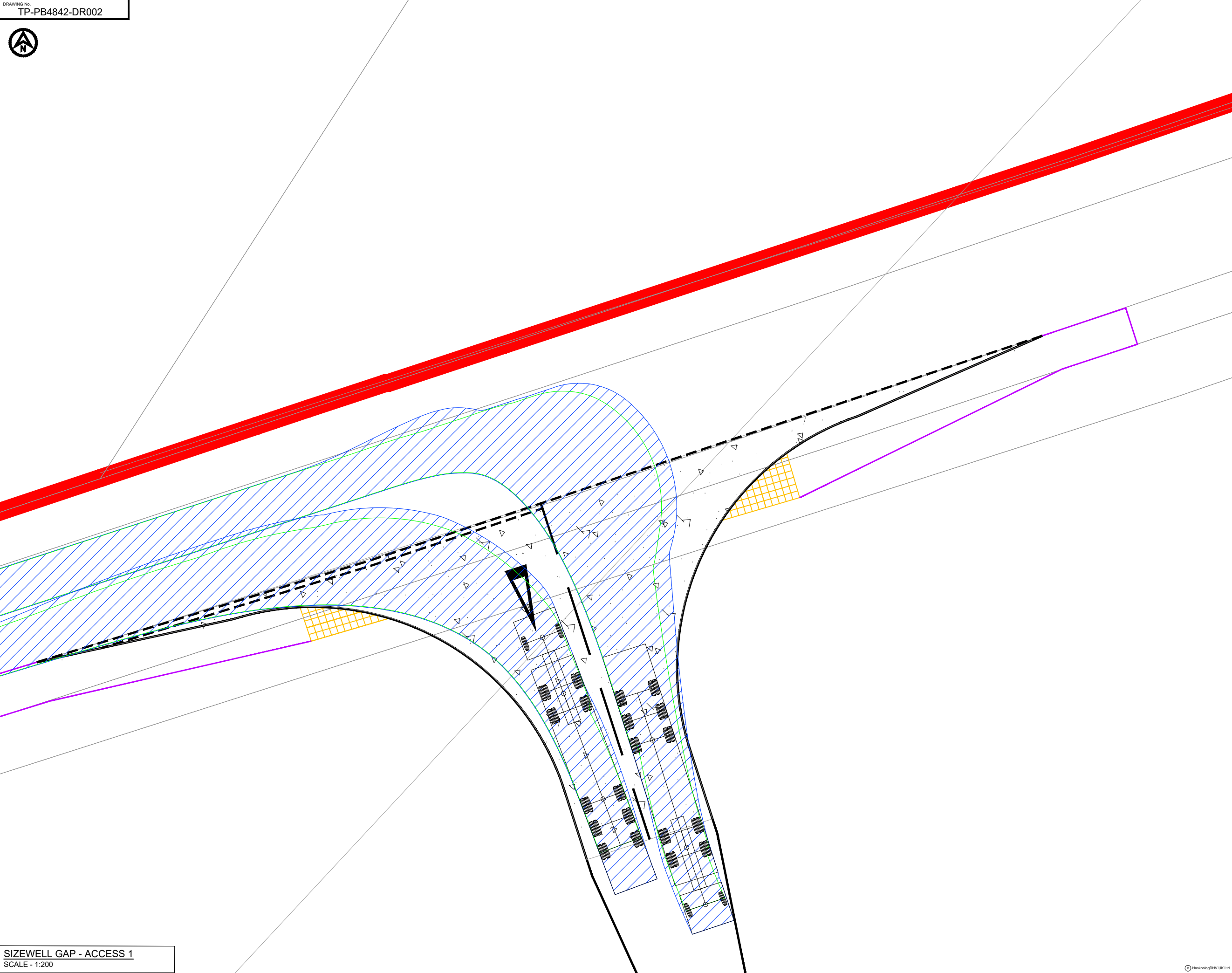
EAST ANGLIA TWO

#### TITLE

ACCESS 1  
SIZEWELL GAP



DRAWN	JL	CHECKED	ST	APPROVED	ADR
DATE	09.10.18	SCALE AT A3	VARIES	AUTOCAD REF.	
DRAWING No	TP-PB4842-DR001				REVISION
CLIENT DWG No.					D0.6



SIZEWELL GAP - ACCESS 1  
SCALE - 1:200

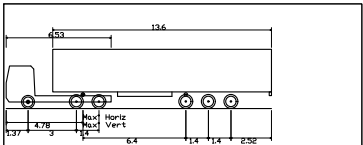
- NOTES**
1. Do not scale from this drawing, all dimensions are in metres unless noted otherwise.
  2. This drawing has been based upon Ordnance Survey Maps and Royal HaskoningDHV can not guarantee the accuracy of data.

- KEY**
- ORDER LIMITS
  - PROPOSED EXTENDED CYCLEWAY
  - PROPOSED ACCESS BOUNDARY/ROAD MARKINGS

FULL DEPTH CARRIAGEWAY CONSTRUCTION WITH BOUND SURFACE

TACTILE PAVING

**VEHICLE TRACKING**



Max Legal Length (UK) Articulated Vehicle (16.5m)  
Overall Length 16.500m  
Overall Width 2.550m  
Overall Body Height 3.681m  
Min Body Ground Clearance 0.411m  
Max Track Width 2.500m  
Lock to lock time 6.00s  
Kerb to Kerb Turning Radius 6.530m

- VEHICLE BODY SWEEP PATH (FORWARD GEAR)
- VEHICLE CHASSIS SWEEP PATH

D0.3	24.07.19	DRAWING TITLE AMENDED	JL	SKT	SKT
D0.2	10.06.19	ORDER LIMITS, ACCESS LOCATION UPDATED	JL	SKT	SKT
D.01		FIRST ISSUE			
REV	DATE	DESCRIPTION	BY	CHK	APP

**REVISIONS**

CLIENT



PROJECT

EAST ANGLIA TWO

TITLE

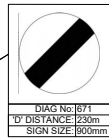
ACCESS 1  
SIZEWELL GAP  
MAX ARTICULATED HGV  
SWEEP PATH ANALYSIS  
(RIGHT TURN IN / LEFT TURN OUT)



DRAWN	JL	CHECKED	SKT	APPROVED	ADR
DATE	09.10.18	SCALE AT A3	1:200	AUTOCAD REF.	

DRAWING No.	TP-PB4842-DR002	REVISION	D0.3
CLIENT DWG No.			

DRAWING No  
TP-PB4842-DR003



VISIBILITY DETAILS  
SCALE - 1:2000



rm  
tages

ACCESS DETAILS  
SCALE - 1:500

#### NOTES

- Do not scale from this drawing. all dimensions are in metres unless noted otherwise.
- This drawing has been based upon Ordnance Survey Maps and Royal HaskoningDHV can not guarantee the accuracy of data.
- Road markings and signs
- All road markings and signage to conform with the 'Traffic Signs Regulation and General Directions 2016 and Chapter 8.
- 'D' distance is the siting distance of temporary road signs from the closest haul road crossing point/access location.
- Visibility
- X-distance - the set back from the nearest edge of the carriageway from which the access will be taken
- Y-Distance - the SSD measured along the nearest edge of the carriageway to its intersection with the centreline of the access.
- SSD - Stopping Sight Distance for design speed of the road.
- All vegetation to be cleared/trimmed within identified visibility envelope.

#### KEY

- ORDER LIMITS
- PROPOSED EXTENDED CYCLEWAY
- PROPOSED ACCESS BOUNDARY/ROAD MARKINGS
- VISIBILITY SPLAY (SEE VISIBILITY TABLE)
- PROPOSED TEMPORARY ROAD SIGN



ACCESS 2 - SIZEWELL GAP	VISIBILITY	
	EAST	WEST
Posted Speed Limit (PSL) (mph)	60	
Required Y-distance SSD for PSL (m)	215	
Existing achievable Y-distance SSD (m)	195	215
Required Y-distance SSD achievable?	No	Yes
85 <sup>th</sup> percentile speed (mph)	57.1	
Required Y-distance SSD for 85 <sup>th</sup> percentile speed (m)	215	
Existing Y-distance SSD suitable for 85 <sup>th</sup> percentile speeds	No	Yes
Proposed Reduced Speed Limit (RSL) (mph)	40	
Assumed design speed (mph)	40	
Required Y-distance SSD for design speed (m)	120	
Required Y-distance SSD achievable?	Yes	Yes
Traffic control measures required	Yes	Yes

\* Distances measured on site.

D0.4	24.07.19	PAGE SIZE CHANGED FROM A3 TO A1	JL	SKT	SKT
D0.3	10.06.19	ORDER LIMITS UPDATED	JL	SKT	SKT
D0.2	16.11.18	ORDER LIMITS UPDATED	JL	SKT	ADR
D.01		FIRST ISSUE			

REVISIONS

CLIENT



PROJECT

EAST ANGLIA TWO

TITLE

ACCESS 2  
SIZEWELL GAP



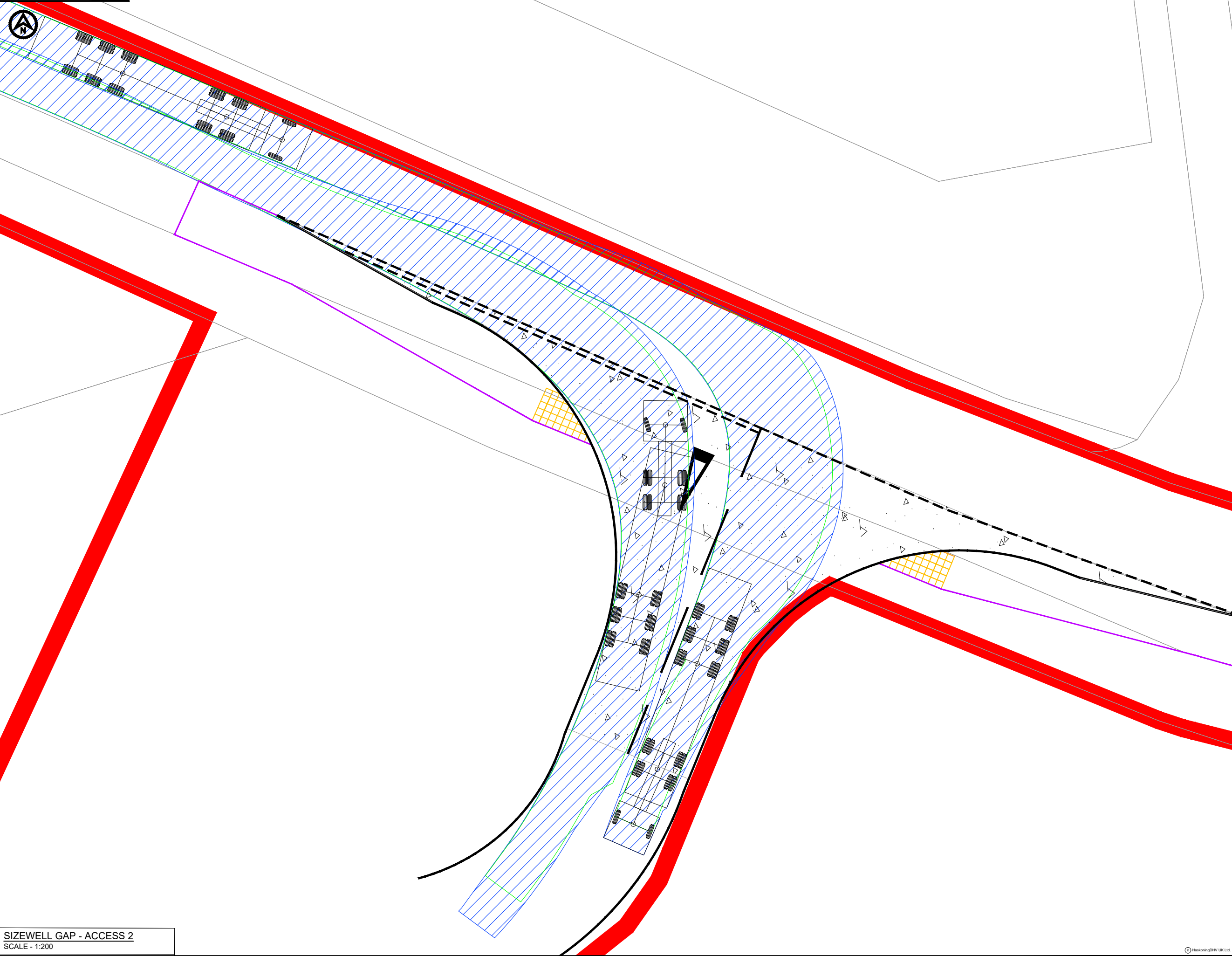
DRAWN JL CHECKED ST APPROVED ADR

DATE 09.10.18 SCALE AT A3 VARIES AUTOCAD REF.

DRAWING No TP-PB4842-DR003 REVISION

CLIENT DWG No. D0.4





SIZEWELL GAP - ACCESS 2  
SCALE - 1:200

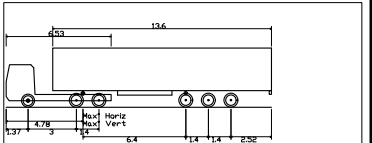
**NOTES**  
1. Do not scale from this drawing, all dimensions are in metres unless noted otherwise.  
2. This drawing has been based upon Ordnance Survey Maps and Royal HaskoningDHV can not guarantee the accuracy of data.

- KEY**
- ORDER LIMITS
  - PROPOSED EXTENDED CYCLEWAY
  - PROPOSED ACCESS BOUNDARY/ROAD MARKINGS

FULL DEPTH CARRIAGEWAY CONSTRUCTION WITH BOUND SURFACE

TACTILE PAVING

**VEHICLE TRACKING**



Max Legal Length (UK) Articulated Vehicle (16.5m)  
Overall Length 16.500m  
Overall Width 2.550m  
Overall Body Height 3.281m  
Min Body Ground Clearance 0.41m  
Max Track Width 2.500m  
Lock to lock time 6.00s  
Kerb to Kerb Turning Radius 6.530m

VEHICLE BODY SWEEP PATH (FORWARD GEAR)  
VEHICLE CHASSIS SWEEP PATH

D0.3	24.07.19	DRAWING TITLE AMENDED	JL	SKT	SKT
D0.2	10.06.19	ORDER LIMITS, UPDATED	JL	SKT	SKT
D.01		FIRST ISSUE			
REV	DATE	DESCRIPTION	BY	CHK	APP

**REVISIONS**

CLIENT



PROJECT

EAST ANGLIA TWO

TITLE

ACCESS 2  
SIZEWELL GAP  
MAX ARTICULATED HGV  
SWEEP PATH ANALYSIS  
(RIGHT TURN IN / LEFT TURN OUT)



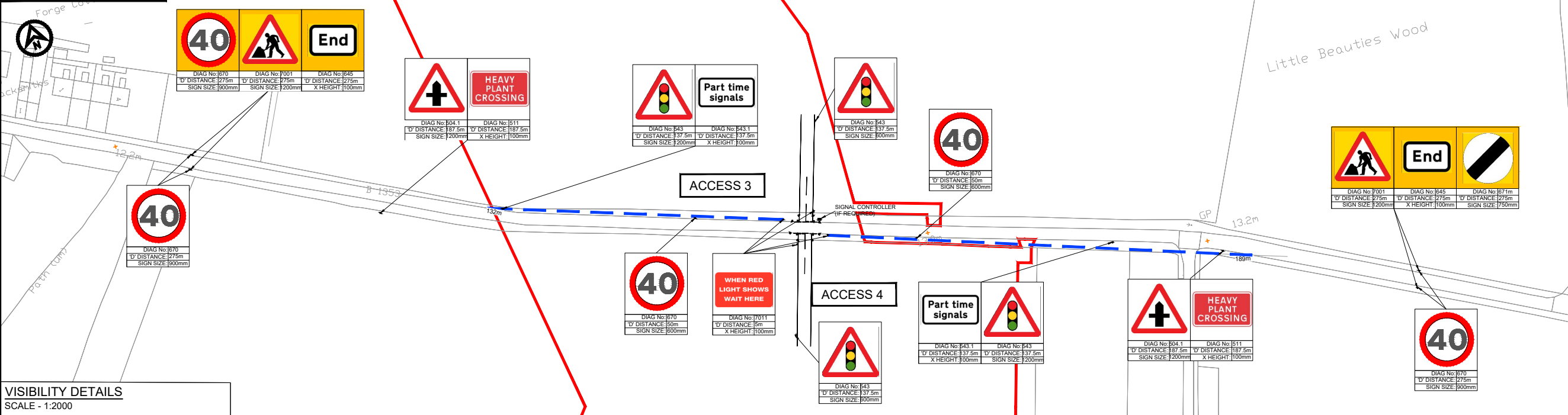
DRAWN JL CHECKED SKT APPROVED ADR

DATE 09.10.18 SCALE AT A3 1:200 AUTOCAD REF.

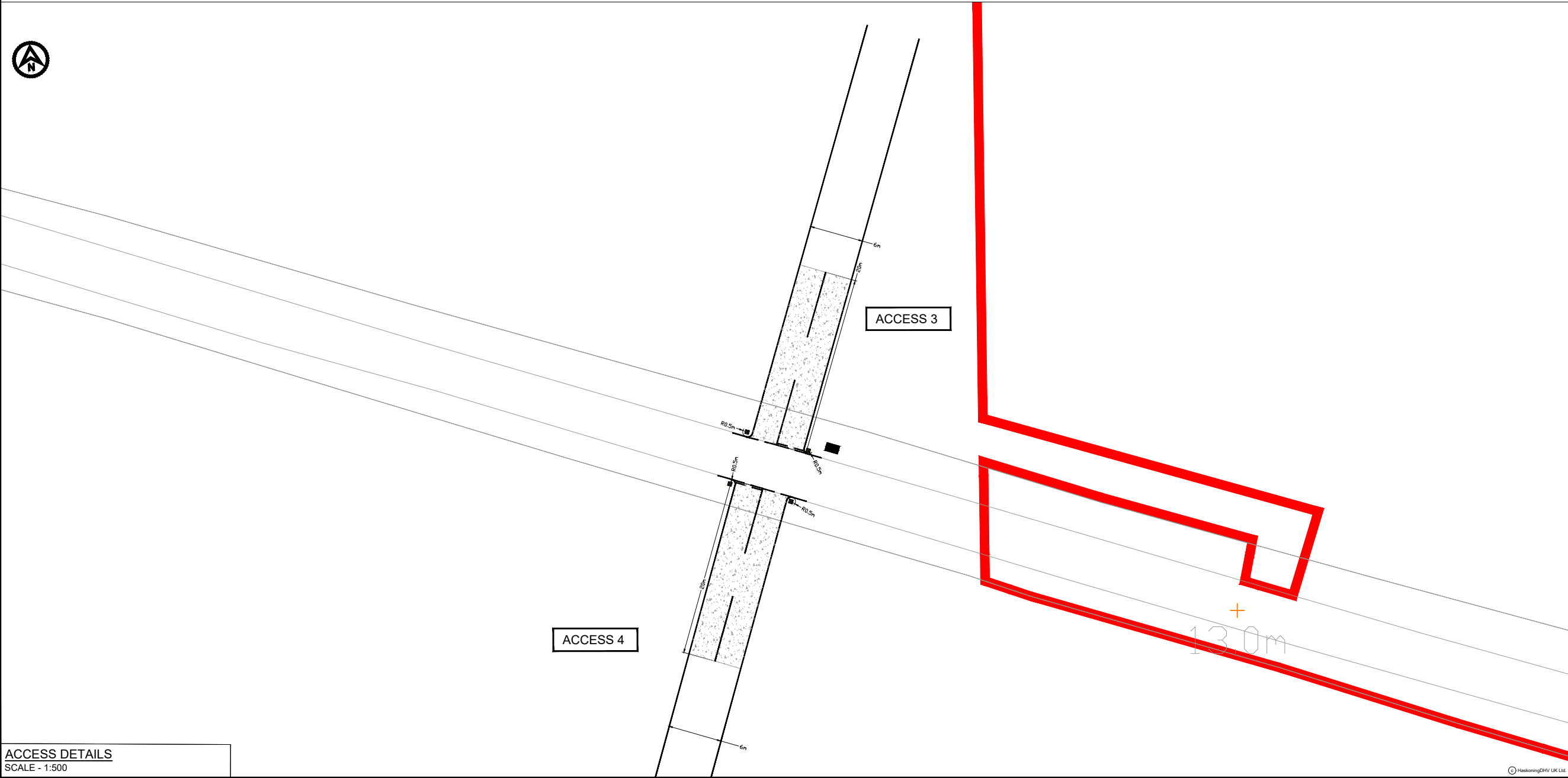
DRAWING No. TP-PB4842-DR004

REVISION D0.3

DRAWING No.  
TP-PB4842-DR007



VISIBILITY DETAILS  
SCALE - 1:2000



ACCESS DETAILS  
SCALE - 1:500

**NOTES**

- Do not scale from this drawing, all dimensions are in metres unless noted otherwise.
- This drawing has been based upon Ordnance Survey Maps and Royal HaskoningDHV can not guarantee the accuracy of data.

**Road markings and signs**

- All road markings and signage to conform with the 'Traffic Signs Regulation and General Directions 2016 and Chapter 6.
- 'D' distance is the sighting distance of temporary road signs from the closest haul road crossing point/access location.

**Visibility**

- SSD - Stopping Sight Distance to traffic signals for design speed of road.
- All vegetation to be cleared/trimmed within identified visibility envelope.

**KEY**

- FULL DEPTH CARRIAGEWAY CONSTRUCTION WITH BOUND SURFACE
- ORDER LIMITS
- PROPOSED ACCESS BOUNDARY/ROAD MARKINGS
- SSD TO TRAFFIC LIGHTS (SEE VISIBILITY TABLE)
- PROPOSED TEMPORARY ROAD SIGN
- PROPOSED TRAFFIC SIGNAL
- PROPOSED YELLOW DEMARCATION BOLLARD

ACCESS 3 - NORTH SIDE OF B1353 (EAST OF ALDRINHAM)		VISIBILITY	
		EAST	WEST
Posted Speed Limit (PSL) (mph)		60	
Required SSD for PSL (m)		215	
Existing achievable SSD (m)		N/A	132
Required SSD achievable?		N/A	No
85 <sup>th</sup> percentile speed (mph)		54.1	
Required SSD for 85 <sup>th</sup> percentile speed (m)		215	
Existing SSD suitable for 85 <sup>th</sup> percentile speeds		N/A	No
Proposed Reduced Speed Limit (RSL) (mph)		40	
Assumed design speed (mph)		40	
Required SSD for design speed (m)		120	
Required SSD achievable?		N/A	Yes
Traffic control measures required		Yes	

Distances measured on site.

ACCESS 4 - SOUTH SIDE OF B1353 (EAST OF ALDRINHAM)		VISIBILITY	
		EAST	WEST
Posted Speed Limit (PSL) (mph)		60	
Required SSD for PSL (m)		215	
Existing achievable SSD (m)		189	N/A
Required SSD achievable?		No	N/A
85 <sup>th</sup> percentile speed (mph)		54.1	
Required SSD for 85 <sup>th</sup> percentile speed (m)		215	
Existing SSD suitable for 85 <sup>th</sup> percentile speeds		No	N/A
Proposed Reduced Speed Limit (RSL) (mph)		40	
Assumed design speed (mph)		40	
Required SSD for design speed (m)		120	
Required SSD achievable?		Yes	N/A
Traffic control measures required		Yes	

Distances measured on site.

DO	DATE	DESCRIPTION	BY	CHK	APP
D0.5	24.07.19	PAGE SIZE CHANGED FROM A3 TO A1	JL	SKT	SKT
D0.4	10.06.19	ORDER LIMITS, ACCESS LOCATION UPDATED	JL	SKT	SKT
D.03	16.11.18	ORDER LIMIT UPDATED	JL	SKT	ADR
D.02	14.11.18	EXTENSION OF TEMPORARY SPEED LIMIT	JL	SKT	ADR
D.01		FIRST ISSUE			

REV	DATE	DESCRIPTION	BY	CHK	APP

REVISIONS

CLIENT

**SCOTTISHPOWER RENEWABLES**

PROJECT

EAST ANGLIA TWO

TITLE

ACCESS 3 & 4  
B1353

**Royal HaskoningDHV**  
Enhancing Society Together

Enterprise House,  
Delta Way, Egham,  
Surrey, TW20 8PX  
Tel: +44(0)1832 569596  
www.royalhaskoningdhv.com

DRAWN	JI	CHECKED	ST	APPROVED	ADR
DATE	09.10.18	SCALE AT A3 VARIES	AUTOCAD REF.		

DRAWING No.	TP-PB4842-DR007	REVISION	D0.5
CLIENT DWG No.			

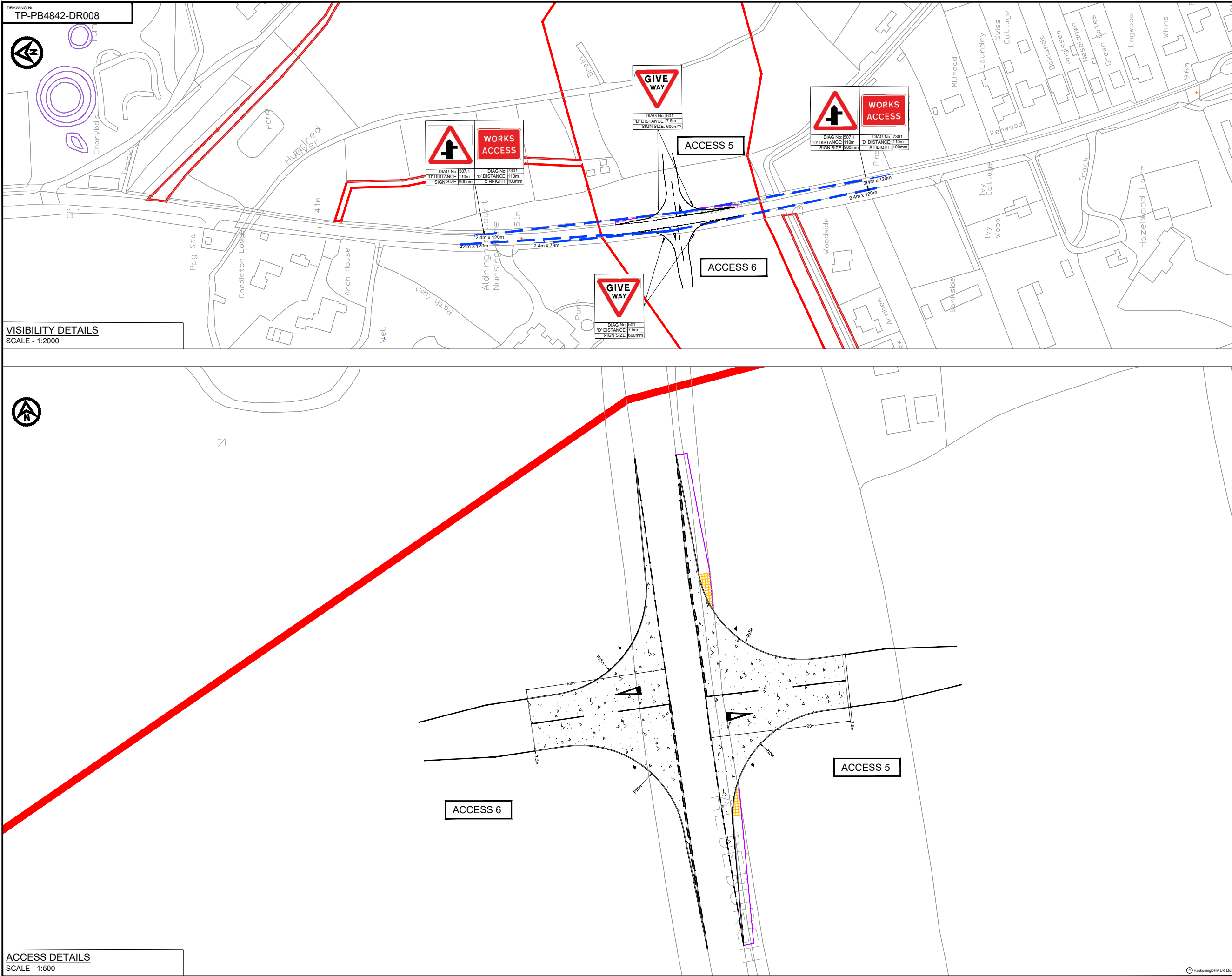
DRAWING No.  
TP-PB4842-DR008



VISIBILITY DETAILS  
SCALE - 1:2000



ACCESS DETAILS  
SCALE - 1:500



- NOTES
1. Do not scale from this drawing, all dimensions are in metres unless noted otherwise.
  2. This drawing has been based upon Ordnance Survey Maps and Royal HaskoningDHV can not guarantee the accuracy of data.
- Road markings and signs
3. All road markings and signage to conform with the 'Traffic Signs Regulation and General Directions 2016 and Chapter 8.
  4. 'D' distance is the stiling distance of temporary road signs from the closest haul road crossing point/access location.
- Visibility
5. X-distance - the set back from the nearest edge of the carriageway from which the access will be taken
  6. Y-Distance - the SSD measured along the nearest edge of the carriageway to its intersection with the centreline of the access.
  7. SSD- Stopping Sight Distance for design speed of the road.
  8. All vegetation to be cleared/trimmed within identified visibility envelope.

KEY

	ORDER LIMITS
	PROPOSED EXTENDED CYCLEWAY
	PROPOSED ACCESS BOUNDARY/ROAD MARKINGS
	VISIBILITY SPLAY (SEE VISIBILITY TABLE)
	PROPOSED TEMPORARY ROAD SIGN

	FULL DEPTH CARRIAGEWAY CONSTRUCTION WITH BOUND SURFACE
	TACTILE PAVING

ACCESS 5 - EAST SIDE OF B1122 (SOUTH OF ALDRINGHAM)		VISIBILITY	
		NORTH	SOUTH
Posted Speed Limit (PSL) (mph)		40	
Required Y-distance SSD for PSL (m)		120	
Existing achievable Y-distance SSD (m)		120	120
Required Y-distance SSD achievable?		Yes	Yes
85 <sup>th</sup> percentile speed (mph)		44.7	
Required Y-distance SSD for 85 <sup>th</sup> percentile speed (m)		120	
Existing Y-distance SSD suitable for 85 <sup>th</sup> percentile speeds		Yes	Yes

ACCESS 6 - WEST SIDE OF B1122 (SOUTH OF ALDRINGHAM)		VISIBILITY	
		NORTH	SOUTH
Posted Speed Limit (PSL) (mph)		40	
Required Y-distance SSD for PSL (m)		120	
Existing achievable Y-distance SSD (m)		120	120
Required Y-distance SSD achievable?		Yes	Yes
85 <sup>th</sup> percentile speed (mph)		44.7	
Required Y-distance SSD for 85 <sup>th</sup> percentile speed (m)		120	
Existing Y-distance SSD suitable for 85 <sup>th</sup> percentile speeds		Yes	Yes

D0.3	24.07.19	PAGE SIZE CHANGED FROM A3 TO A1	JL	SKT	SKT
D0.4	11.06.19	ORDER LIMITS, ACCESS LOCATION UPDATED	JL	SKT	SKT
D0.3	11.04.19	HIGHWAY BOUNDARY ADDED	JL	SKT	SKT
D0.2	16.11.18	ORDER LIMITS UPDATED	JL	SKT	ADR
D.01		FIRST ISSUE			

REV	DATE	DESCRIPTION	BY	CHK	APP
-----	------	-------------	----	-----	-----

REVISIONS

CLIENT



PROJECT

EAST ANGLIA TWO

TITLE

ACCESS 5 & 6  
B1122 ALDEBURGH ROAD



DRAWN JL CHECKED ST APPROVED ADR

DATE 09.10.18 SCALE AT A3 VARIES AUTOCAD REF.

DRAWING No. TP-PB4842-DR008

CLIENT DWG No. D0.5





ACCESS 5

B122 ALDEBURGH ROAD - ACCESS 5  
SCALE - 1:200

NOTES

1. Do not scale from this drawing, all dimensions are in metres unless noted otherwise.
2. This drawing has been based upon Ordnance Survey Maps and Royal HaskoningDHV can not guarantee the accuracy of data.

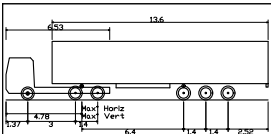
KEY

- ORDER LIMITS
- PROPOSED EXTENDED CYCLEWAY
- PROPOSED ACCESS BOUNDARY/ROAD MARKINGS

FULL DEPTH CARRIAGEWAY CONSTRUCTION WITH BOUND SURFACE

TACTILE PAVING

VEHICLE TRACKING



Max Legal Length (UK) Articulated Vehicle (16.5m)  
Overall Length 16.50m  
Overall Width 2.550m  
Overall Body Height 3.65m  
Min Bdy Ground Clearance 0.41m  
Max Track Width 2.50m  
Lock to lock time 6.00s  
Kerb to Kerb Turning Radius 6.530m

VEHICLE BODY SWEEP PATH (FORWARD GEAR)

VEHICLE CHASSIS SWEEP PATH

D0.3	24.07.19	DRAWING TITLE AMENDED	JL	SKT	SKT
D0.2	11.06.19	ORDER LIMITS, ACCESS LOCATION UPDATED	JL	SKT	SKT
D.01		FIRST ISSUE			
REV	DATE	DESCRIPTION	BY	CHK	APP

REVISIONS

CLIENT



PROJECT

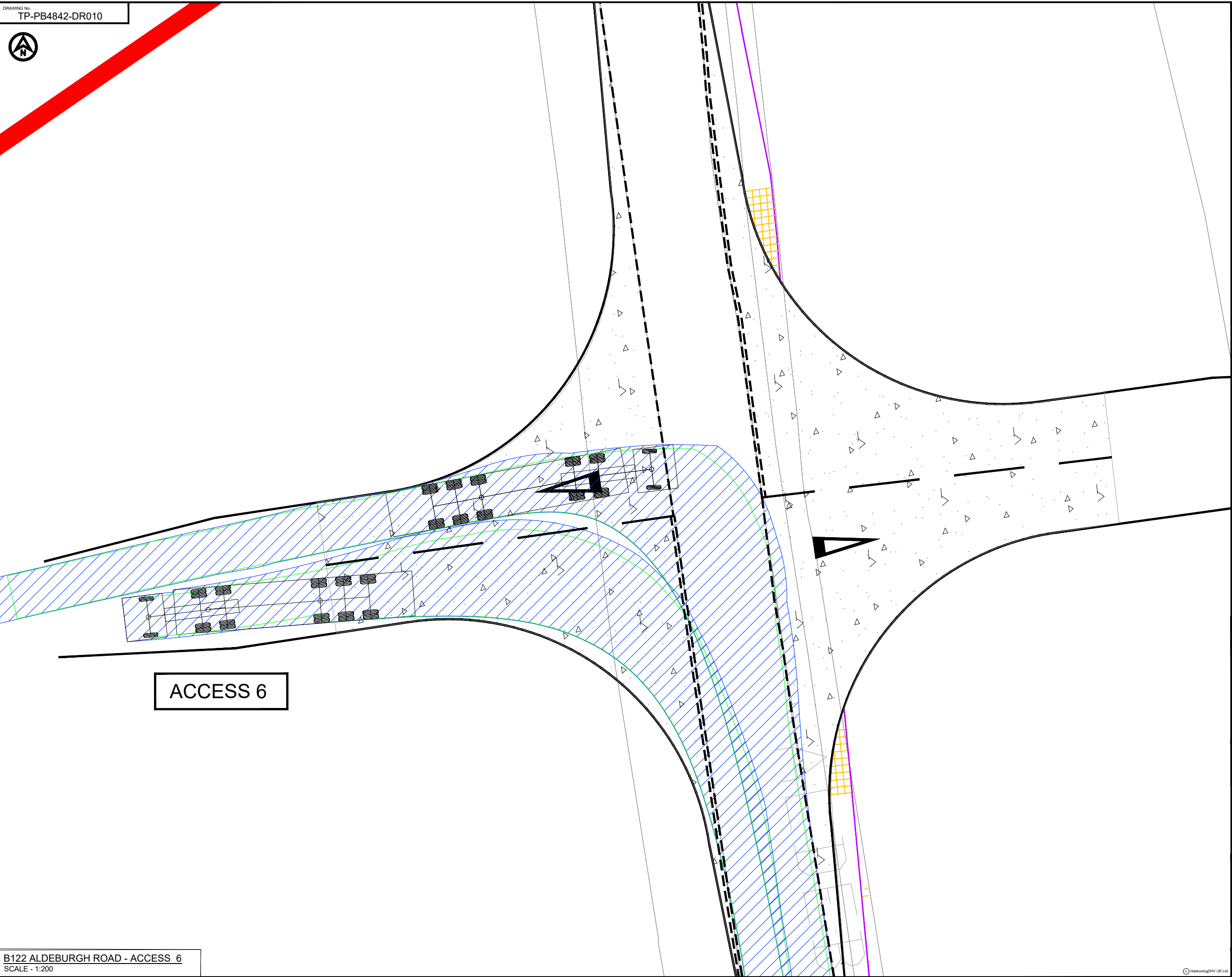
EAST ANGLIA TWO

TITLE

ACCESS 5  
B1122 ALDEBURGH ROAD  
MAX ARTICULATED HGV  
SWEEP PATH ANALYSIS



DRAWN	JL	CHECKED	SKT	APPROVED	ADR
DATE	09.10.18	SCALE AT A3	1:200	AUTOCAD REF.	
DRAWING No.	TP-PB4842-DR009	REVISION			
CLIENT DWG No.					D0.3



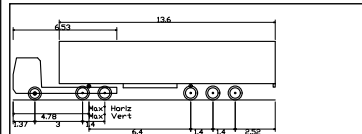
**NOTES**  
1. Do not scale from this drawing, all dimensions are in metres unless noted otherwise.  
2. This drawing has been based upon Ordnance Survey Maps and Royal HaskoningDHV can not guarantee the accuracy of data.

- KEY**
- ORDER LIMITS
  - PROPOSED EXTENDED CYCLEWAY
  - PROPOSED ACCESS BOUNDARY/ROAD MARKINGS

FULL DEPTH CARRIAGEWAY CONSTRUCTION WITH BOUND SURFACE

TACTILE PAVING

**VEHICLE TRACKING**



Max Legal Length (UK) Articulated Vehicle (16.5m)  
Overall Length 16.50m  
Overall Width 2.55m  
Overall Body Height 3.65m  
Min Body Ground Clearance 0.41m  
Max Track Width 2.55m  
Lock to lock time 6.00s  
Kerb to Kerb Turning Radius 6.530m

- VEHICLE BODY SWEEP PATH (FORWARD GEAR)
- VEHICLE CHASSIS SWEEP PATH

D0.3	24.07.19	DRAWING TITLE AMENDED	JL	SKT	SKT
D0.2	11.06.19	ORDER LIMITS, ACCESS LOCATION UPDATED	JL	SKT	SKT
D.01		FIRST ISSUE			
REV	DATE	DESCRIPTION	BY	CHK	APP

**REVISIONS**

CLIENT



**PROJECT**

EAST ANGLIA TWO

**TITLE**

ACCESS 6  
B1122 ALDEBURGH ROAD  
MAX ARTICULATED HGV  
SWEEP PATH ANALYSIS



DRAWN	JL	CHECKED	SKT	APPROVED	ADR
DATE	09.10.18	SCALE AT A3	1:200	AUTOCAD REF.	

DRAWING No.	TP-PB4842-DR010	REVISION	D0.3
CLIENT DWG No.			

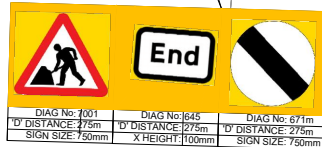
DRAWING No.  
TP-PB4842-DR027



Covert



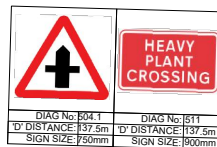
DIAG No: 1670  
1' DISTANCE: 275m  
SIGN SIZE: 900mm



DIAG No: 1001  
1' DISTANCE: 275m  
SIGN SIZE: 750mm

DIAG No: 1645  
1' DISTANCE: 275m  
X HEIGHT: 1100mm

DIAG No: 671m  
1' DISTANCE: 275m  
SIGN SIZE: 750mm



DIAG No: 1041  
1' DISTANCE: 137.5m  
SIGN SIZE: 750mm

DIAG No: 1511  
1' DISTANCE: 137.5m  
SIGN SIZE: 900mm



DIAG No: 1670  
1' DISTANCE: 50m  
SIGN SIZE: 900mm

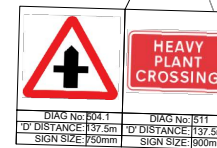


DIAG No: 1501  
1' DISTANCE: 117m  
SIGN SIZE: 900mm

ACCESS 8



DIAG No: 1670  
1' DISTANCE: 50m  
SIGN SIZE: 900mm



DIAG No: 1041  
1' DISTANCE: 137.5m  
SIGN SIZE: 750mm

DIAG No: 1511  
1' DISTANCE: 137.5m  
SIGN SIZE: 900mm

EXISTING SPEED LIMIT SIGNS TO BE  
REMOVED FOR THE DURATION OF  
THE CONSTRUCTION PERIOD

VISIBILITY DETAILS  
SCALE - 1:2000



ACCESS 7

ACCESS 8

ACCESS DETAILS  
SCALE - 1:500

#### NOTES

- Do not scale from this drawing, all dimensions are in metres unless noted otherwise.
  - This drawing has been based upon Ordnance Survey Maps and Royal HaskoningDHV can not guarantee the accuracy of data.
- Visibility
- X-distance - the set back from the nearest edge of the carriageway from which the access will be taken
  - Y-distance - the SSD measured along the nearest edge of the carriageway to its intersection with the centreline of the access.
  - SSD - Stopping Sight Distance for design speed of the road.
  - All vegetation to be cleared/trimmed within identified visibility envelope.

#### KEY

FULL DEPTH CARRIAGEWAY CONSTRUCTION WITH BOUND SURFACE

HEDGEROW REMOVAL REQUIRED TO ACCOMMODATE VISIBILITY

- ORDER LIMITS
- PROPOSED ACCESS BOUNDARY/ROAD MARKINGS
- VISIBILITY SPLAY (SEE VISIBILITY TABLE)
- PROPOSED TEMPORARY ROAD SIGN

ACCESS 7 - EAST SIDE OF SLOE LANE (NORTH OF KNORDISHALL COMMON)		VISIBILITY	
		EAST	WEST
Posted Speed Limit (PSL) (mph)		30	215
Required Y-distance SSD for PSL (m)		12	101
Existing achievable Y-distance SSD (m)		No	No
Required Y-distance SSD achievable?		No	No
Proposed Reduced Speed Limit (RSL) (mph)		30	30
Assumed design speed (mph)		30	30
Required Y-distance SSD for design speed (m)		59(MTS)	59(MTS)
Required Y-distance SSD achievable?		Yes	Yes
Traffic control measures required		Yes	Yes

ACCESS 8 - WEST SIDE OF SLOE LANE (NORTH OF KNORDISHALL COMMON)		VISIBILITY	
		EAST	WEST
Posted Speed Limit (PSL) (mph)		30	215
Required Y-distance SSD for PSL (m)		12	101
Existing achievable Y-distance SSD (m)		91	19
Required Y-distance SSD achievable?		No	No
Proposed Reduced Speed Limit (RSL) (mph)		30	30
Assumed design speed (mph)		30	30
Required Y-distance SSD for design speed (m)		59(MTS)	59(MTS)
Required Y-distance SSD achievable?		Yes	Yes
Traffic control measures required		Yes	Yes

DO 2	24.07.19	HEDGEROW REMOVAL AND PAGE SIZE AMENDED	JL	SKT	SKT
D.01		FIRST ISSUE			
REV	DATE	DESCRIPTION	BY	CHK	APP

#### REVISIONS

#### CLIENT



#### PROJECT

EAST ANGLIA TWO

#### TITLE

ACCESS 7 & 8  
GROVE ROAD



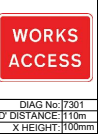
DRAWN	JL	CHECKED	ST	APPROVED	ADR
DATE	12.06.19	SCALE AT A3	VARIABLE	AUTOCAD REF.	
DRAWING No. TP-PB4842-DR027					REVISION
CLIENT DWG No.					D0.2

DRAWING No.  
TP-PB4842-DR011



ACCESS 10

ACCESS 9



SNAPE ROAD

Bulls High Cottage  
Pump  
1's Lane Cottage

VISIBILITY DETAILS  
SCALE - 1:2000



ACCESS 10

ACCESS 9

ACCESS DETAILS  
SCALE - 1:500

#### NOTES

- Do not scale from this drawing, all dimensions are in metres unless noted otherwise.
  - This drawing has been based upon Ordnance Survey Maps and Royal HaskoningDHV can not guarantee the accuracy of data.
- Road markings and signs
- All road markings and signage to conform with the 'Traffic Signs Regulation and General Directions 2016 and Chapter 8.
  - 'D' distance is the stiling distance of temporary road signs from the closest haul road crossing point/access location.

#### Visibility

- X-distance - the set back from the nearest edge of the carriageway from which the access will be taken
- Y-Distance - the SSD measured along the nearest edge of the carriageway to its intersection with the centreline of the access.
- SSD - Stopping Sight Distance for design speed of the road.
- All vegetation to be cleared/trimmed within identified visibility envelope.

#### KEY

- FULL DEPTH CARRIAGEWAY CONSTRUCTION WITH BOUND SURFACE
- HEDGEROW REMOVAL REQUIRED TO ACCOMMODATE VISIBILITY
- ORDER LIMITS
- PROPOSED ACCESS BOUNDARY/ROAD MARKINGS
- VISIBILITY SPLAY (SEE VISIBILITY TABLE)
- PROPOSED TEMPORARY ROAD SIGN

ACCESS 9 - EAST SIDE OF B1069 (SOUTH OF COLDFAIR GREEN)		VISIBILITY NORTH SOUTH	
Posted Speed Limit (PSL) (mph)	40		
Required Y-distance SSD for PSL (m)	120		
Existing achievable Y-distance SSD (m)	50	95	
Required Y-distance SSD achievable?	No	No	
85 <sup>th</sup> percentile speed (mph)	39.4		
Required Y-distance SSD for 85 <sup>th</sup> percentile speed (m)	120		
Existing Y-distance SSD suitable for 85 <sup>th</sup> percentile speeds	No	No	
Proposed Reduced Speed Limit (RSL) (mph)	40		
Assumed design speed (mph)	40		
Required Y-distance SSD for design speed (m)	120		
Required Y-distance SSD achievable?	Yes	Yes	
Traffic control measures required	Yes	Yes	

ACCESS 10 - WEST SIDE OF B1069 (SOUTH OF COLDFAIR GREEN)		VISIBILITY NORTH SOUTH	
Posted Speed Limit (PSL) (mph)	40		
Required Y-distance SSD for PSL (m)	120		
Existing achievable Y-distance SSD (m)	145	268	
Required Y-distance SSD achievable?	Yes	Yes	
85 <sup>th</sup> percentile speed (mph)	39.4		
Required Y-distance SSD for 85 <sup>th</sup> percentile speed (m)	120		
Existing Y-distance SSD suitable for 85 <sup>th</sup> percentile speeds	Yes	Yes	
Proposed Reduced Speed Limit (RSL) (mph)	40		
Assumed design speed (mph)	40		
Required Y-distance SSD for design speed (m)	120		
Required Y-distance SSD achievable?	Yes	Yes	
Traffic control measures required	Yes	Yes	

D0.4	24.07.19	PAGE SIZE CHANGED FROM A3 TO A1	JL	SKT	SKT
D0.3	27.06.19	ORDER LIMITS, ACCESS LOCATION UPDATED	JL	SKT	SKT
D0.2	16.11.18	ORDER LIMITS UPDATED	JL	SKT	ADR
D.01		FIRST ISSUE			
REV	DATE	DESCRIPTION	BY	CHK	APP

#### REVISIONS

#### CLIENT



#### PROJECT

EAST ANGLIA TWO

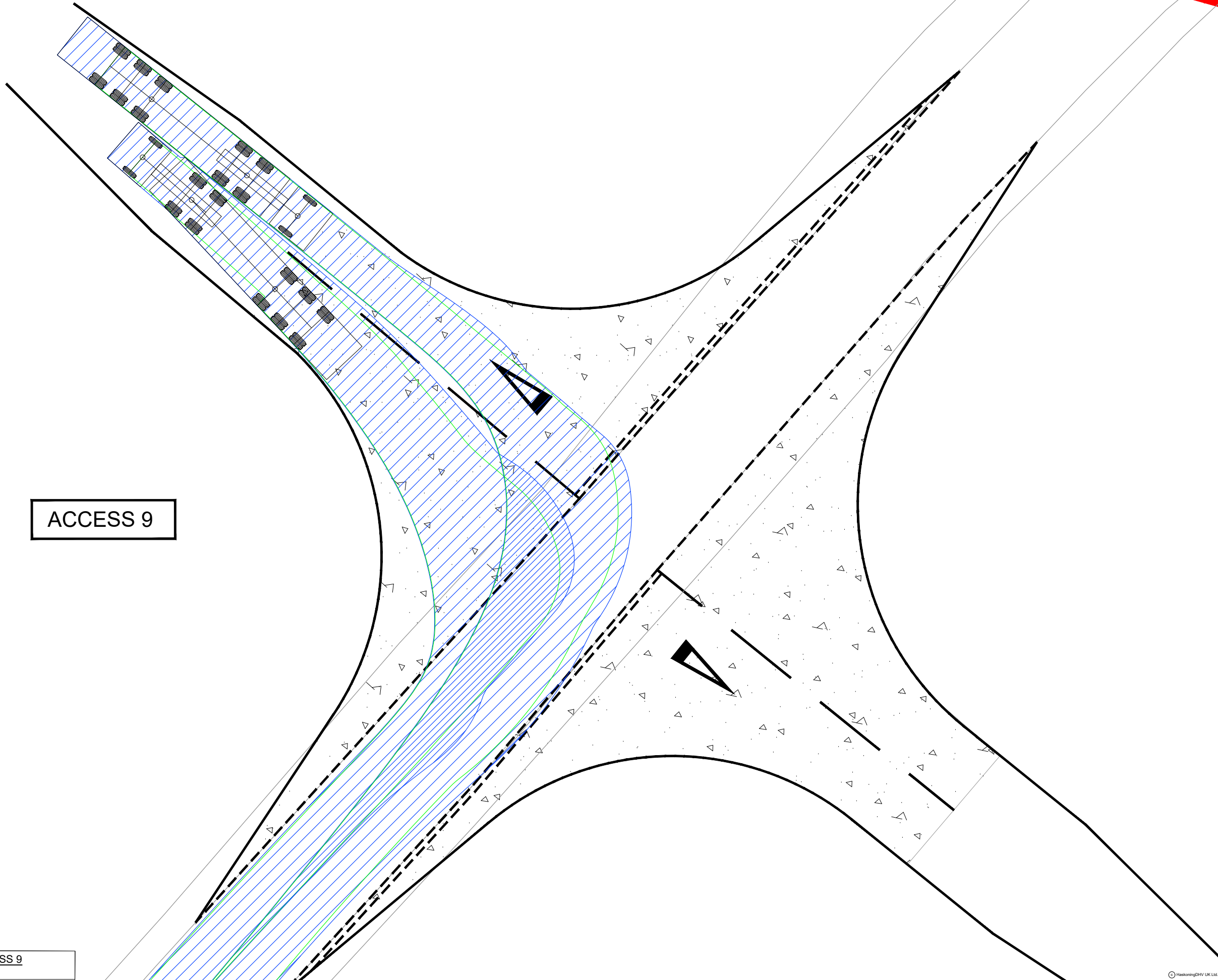
#### TITLE

ACCESS 9 & 10  
SNAPE ROAD



DRAWN	JL	CHECKED	ST	APPROVED	ADR
DATE	09.10.18	SCALE AT A3	VARIABLES	AUTOCAD REF.	
DRAWING No.	TP-PB4842-DR011				REVISION
CLIENT DWG No.					D0.4

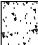




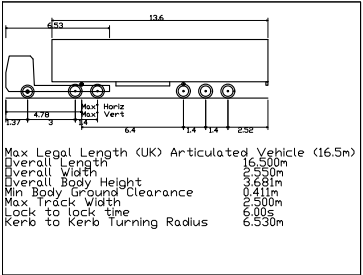
SNAPE ROAD - ACCESS 9  
SCALE - 1:200



**NOTES**  
1. Do not scale from this drawing, all dimensions are in metres unless noted otherwise.  
2. This drawing has been based upon Ordnance Survey Maps and Royal HaskoningDHV can not guarantee the accuracy of data.

**KEY**  
— ORDER LIMITS  
— PROPOSED ACCESS BOUNDARY/ROAD MARKINGS

 FULL DEPTH CARRIAGEWAY CONSTRUCTION WITH BOUND SURFACE

**VEHICLE TRACKING**



 VEHICLE BODY SWEEP PATH (FORWARD GEAR)  
 VEHICLE CHASSIS SWEEP PATH

D0.3	24.07.19	DRAWING TITLE AMENDED	JL	SKT	SKT
D0.2	27.06.19	ORDER LIMITS, ACCESS LOCATION UPDATED	JL	SKT	SKT
D.01		FIRST ISSUE			
REV	DATE	DESCRIPTION	BY	CHK	APP

**REVISIONS**

CLIENT



PROJECT

EAST ANGLIA TWO

TITLE

ACCESS 9  
SNAPE ROAD  
MAX ARTICULATED HGV  
SWEEP PATH ANALYSIS  
(RIGHT TURN IN / LEFT TURN OUT)



DRAWN JL CHECKED SKT APPROVED ADR

DATE 09.10.18 SCALE AT A3 1:200 AUTOCAD REF.

DRAWING No. TP-PB4842-DR012

CLIENT DWG No.





ACCESS 10

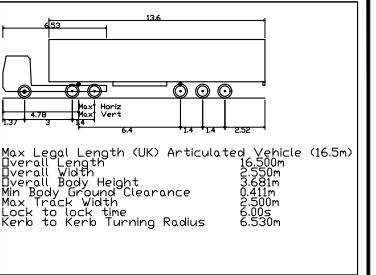
SNAPE ROAD - ACCESS 10  
SCALE - 1:200

- NOTES**
1. Do not scale from this drawing, all dimensions are in metres unless noted otherwise.
  2. This drawing has been based upon Ordnance Survey Maps and Royal HaskoningDHV can not guarantee the accuracy of data.

- KEY**
- ORDER LIMITS
  - PROPOSED ACCESS BOUNDARY/ROAD MARKINGS

FULL DEPTH CARRIAGEWAY CONSTRUCTION WITH BOUND SURFACE

**VEHICLE TRACKING**



- VEHICLE BODY SWEEP PATH (FORWARD GEAR)
- VEHICLE CHASSIS SWEEP PATH

D0.3	24.07.19	DRAWING TITLE AMENDED	JL	SKT	SKT
D0.2	27.06.19	ORDER LIMITS, ACCESS LOCATION UPDATED	JL	SKT	SKT
D.01		FIRST ISSUE			
REV	DATE	DESCRIPTION	BY	CHK	APP

**REVISIONS**

CLIENT



PROJECT

EAST ANGLIA TWO

TITLE

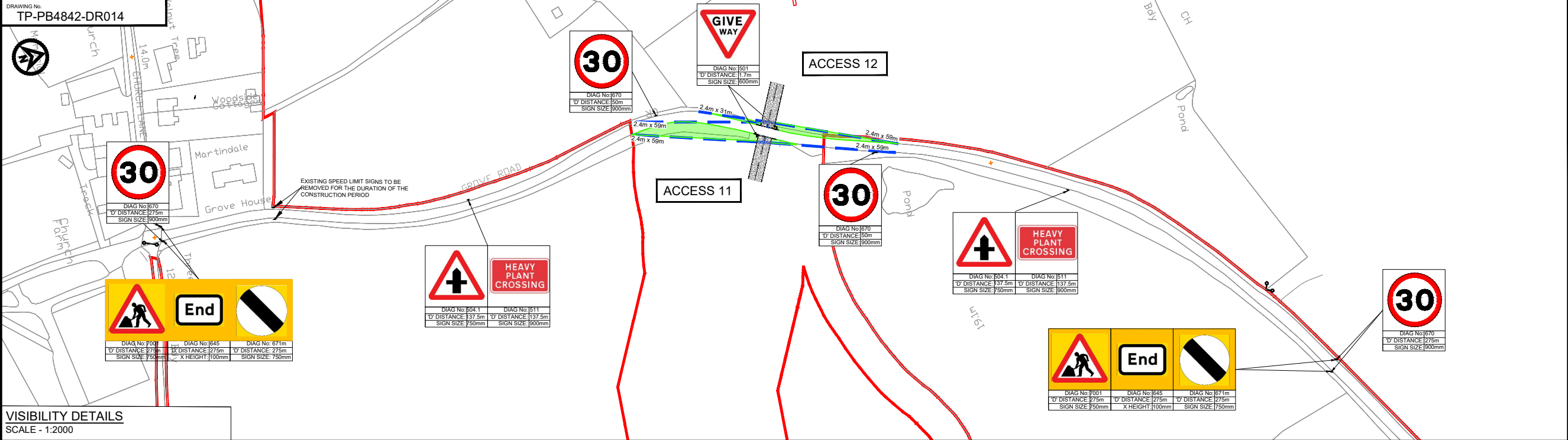
ACCESS 10  
SNAPE ROAD  
MAX ARTICULATED HGV  
SWEEP PATH ANALYSIS  
(LEFT TURN OUT)



DRAWN	JL	CHECKED	SKT	APPROVED	ADR
DATE	09.10.18	SCALE AT A3	1:200	AUTOCAD REF.	

DRAWING No.	TP-PB4842-DR013	REVISION	D0.3
CLIENT DWG No.			

DRAWING No.  
TP-PB4842-DR014



VISIBILITY DETAILS  
SCALE - 1:2000



ACCESS DETAILS  
SCALE - 1:500

- NOTES
- Do not scale from this drawing, all dimensions are in metres unless noted otherwise.
  - This drawing has been based upon Ordnance Survey Maps and Royal HaskoningDHV can not guarantee the accuracy of data.
- Visibility
- X-distance - the set back from the nearest edge of the carriageway from which the access will be taken
  - Y-Distance - the SSD measured along the nearest edge of the carriageway to its intersection with the centreline of the access.
  - SSD- Stopping Sight Distance for design speed of the road.
  - All vegetation to be cleared/trimmed within identified visibility envelope.

- KEY
- FULL DEPTH CARRIAGEWAY CONSTRUCTION WITH BOUND SURFACE
  - HEDGECROW REMOVAL REQUIRED TO ACCOMMODATE VISIBILITY
  - ORDER LIMITS
  - PROPOSED ACCESS BOUNDARY/ROAD MARKINGS
  - VISIBILITY SPPLAY (SEE VISIBILITY TABLE)
  - PROPOSED SPEED VISIBILITY SPPLAY
  - PROPOSED TEMPORARY ROAD SIGN

ACCESS 11 - EAST SIDE OF GROVE ROAD (NORTH OF FRISTON)		VISIBILITY	
		EAST	WEST
Posted Speed Limit (PSL) (mph)		60	215
Required Y-distance SSD for PSL (m)		35	45
Existing achievable Y-distance SSD (m)		No	No
Required Y-distance SSD achievable?		No	No
85 <sup>th</sup> percentile speed (mph)		31.9	
Required Y-distance SSD for 85 <sup>th</sup> percentile speed (m)		59 (M5)	
Proposed Reduced Speed Limit (RSL) (mph)		30	
Required Y-distance SSD for design speed (m)		59	
Required Y-distance SSD achievable?		Yes	Yes
Traffic control measures required		Yes	Yes

ACCESS 12 - WEST SIDE OF GROVE ROAD (NORTH OF FRISTON)		VISIBILITY	
		EAST	WEST
Posted Speed Limit (PSL) (mph)		60	215
Required Y-distance SSD for PSL (m)		35	45
Existing achievable Y-distance SSD (m)		0	0
Required Y-distance SSD achievable?		No	No
85 <sup>th</sup> percentile speed (mph)		31.9	
Required Y-distance SSD for 85 <sup>th</sup> percentile speed (m)		59 (M5)	
Proposed Reduced Speed Limit (RSL) (mph)		30	
Required Y-distance SSD for design speed (m)		59	
Required Y-distance SSD achievable?		Yes	Yes
Traffic control measures required		Yes	Yes

Distances measured on site.

D0.4	24.07.18	PAGE SIZE CHANGED FROM A3 TO A1	JL	SKT	SKT
D0.3	12.06.18	ORDER LIMITS UPDATED	JL	SKT	SKT
D0.2	16.11.18	ORDER LIMITS UPDATED	JL	SKT	ADR
D0.1		FIRST ISSUE			

REV	DATE	DESCRIPTION	BY	CHK	APP
-----	------	-------------	----	-----	-----

REVISIONS

CLIENT



PROJECT

EAST ANGLIA TWO

TITLE

ACCESS 11 & 12  
GROVE ROAD

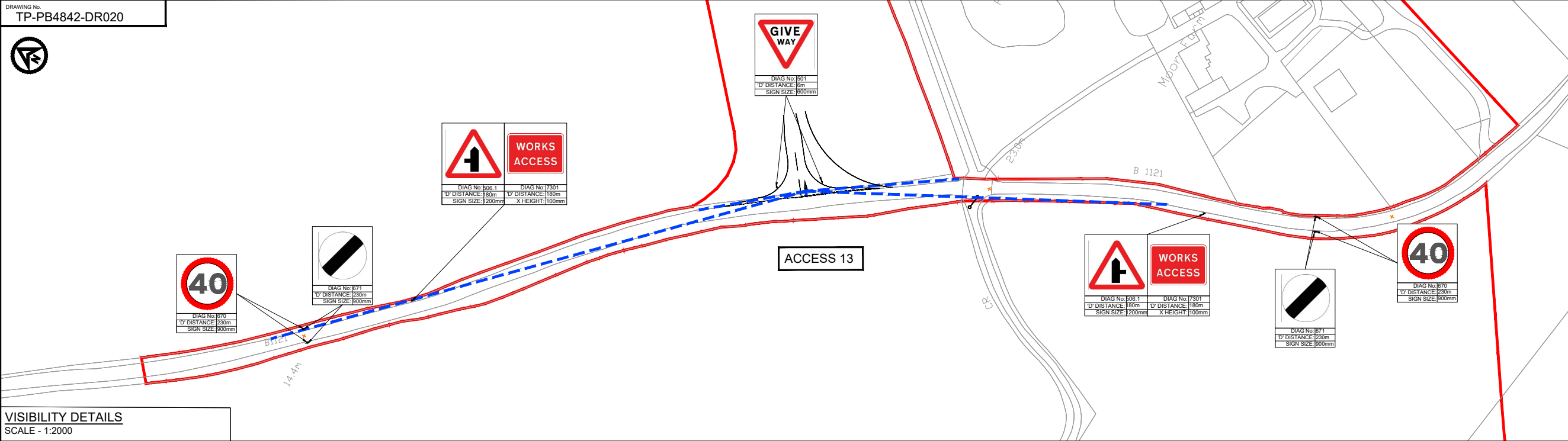


DRAWN JL CHECKED ST APPROVED ADR

DATE 09.10.18 SCALE AT A3 VARIES AUTOCAD REF.

DRAWING No. TP-PB4842-DR014

CLIENT DWG No. REVISION D0.4



VISIBILITY DETAILS  
SCALE - 1:2000



ACCESS DETAILS  
SCALE - 1:200

- NOTES**
1. Do not scale from this drawing, all dimensions are in metres unless noted otherwise.
  2. This drawing has been based upon Ordnance Survey Maps and Royal HaskoningDHV can not guarantee the accuracy of data.
- Road markings and signs**
3. All road markings and signage to conform with the 'Traffic Signs Regulation and General Directions 2016 and Chapter 8.
  4. 'D' distance is the sighting distance of temporary road signs from the closest haul road crossing point/access location.
- Visibility**
5. X-distance - the set back from the nearest edge of the carriageway from which the access will be taken
  6. Y-distance - the SSD measured along the nearest edge of the carriageway to its intersection with the centreline of the access.
  7. SSD - Stopping Sight Distance for design speed of the road.
  8. All vegetation to be cleared/trimmed within identified visibility envelope.

**KEY**

	PROPOSED ACCESS BOUNDARY/ROAD MARKINGS
	VISIBILITY SPLAY (SEE VISIBILITY TABLE)
	PROPOSED TEMPORARY ROAD SIGN
	FULL DEPTH CARRIAGEWAY CONSTRUCTION WITH BOUND SURFACE
	INDICATIVE ABNORMAL LOAD VEHICLE OVERRUN AREA

ACCESS 13 - B1121		VISIBILITY	
		NORTH	SOUTH
Posted Speed Limit (PSL) (mph)		60	
Required Y-distance SSD for PSL (m)		215	
Existing achievable Y-distance SSD (m)		247	161
Required Y-distance SSD achievable?	Yes	No	
85 <sup>th</sup> percentile speed (mph)		43.8	
Required Y-distance SSD for 85 <sup>th</sup> percentile speed (m)		160	
Existing Y-distance SSD suitable for 85 <sup>th</sup> percentile speeds	Yes	Yes	
Proposed Reduced Speed Limit (RSL) (mph)		40	

Distances measured on site.

D0.3	24.07.19	PAGE SIZE CHANGED FROM A3 TO A1	JL	SKT	SKT
D0.2	12.06.19	ORDER LIMITS UPDATED	JL	SKT	SKT
D.01		FIRST ISSUE			
REV	DATE	DESCRIPTION	BY	CHK	APP

REVISIONS

CLIENT



PROJECT

EAST ANGLIA TWO

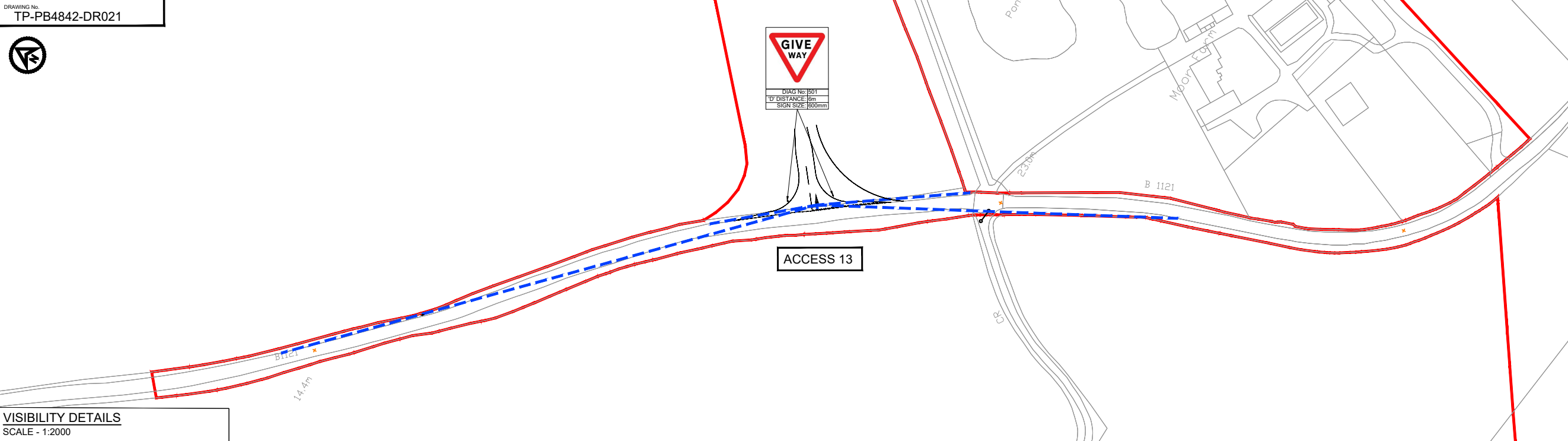
TITLE

ACCESS 13  
B1121  
CONSTRUCTION PHASE



DRAWN	JL	CHECKED	ST	APPROVED	ADR
DATE	13.11.18	SCALE AT A3	VARIABLE	AUTOCAD REF.	
DRAWING No.	TP-PB4842-DR020				REVISION
CLIENT DWG No.					D0.3

DRAWING No.  
TP-PB4842-DR021



VISIBILITY DETAILS  
SCALE - 1:2000



ACCESS DETAILS  
SCALE - 1:500

- NOTES**
1. Do not scale from this drawing, all dimensions are in metres unless noted otherwise.
  2. This drawing has been based upon Ordnance Survey Maps and Royal HaskoningDHV can not guarantee the accuracy of data.
  3. All road markings and signage to conform with the 'Traffic Signs Regulation and General Directions 2016 and Chapter 8.
  4. 'D' distance is the stiling distance of temporary road signs from the closest haul road crossing point/access location.
- Visibility**
5. X-distance - the set back from the nearest edge of the carriageway from which the access will be taken
  6. Y-distance - the SSD measured along the nearest edge of the carriageway to its intersection with the centreline of the access.
  7. SSD - Stopping Sight Distance for design speed of the road.
  8. All vegetation to be cleared/trimmed within identified visibility envelope.

**KEY**

	PROPOSED ACCESS BOUNDARY/ROAD MARKINGS
	VISIBILITY SPY (SEE VISIBILITY TABLE)
	PROPOSED ROAD SIGN
	FULL DEPTH CARRIAGEWAY CONSTRUCTION WITH BOUND SURFACE
	INDICATIVE ABNORMAL LOAD VEHICLE OVERRUN AREA

ACCESS 13 - B1121		VISIBILITY	
		NORTH	SOUTH
Posted Speed Limit (PSL) (mph)		60	
Required Y-distance SSD for PSL (m)		215	
Existing achievable Y-distance SSD (m)		247	161
Required Y-distance SSD achievable?		Yes	No
85 <sup>th</sup> percentile speed (mph)		43.8	
Required Y-distance SSD for 85 <sup>th</sup> percentile speed (m)		160	
Existing Y-distance SSD suitable for 85 <sup>th</sup> percentile speeds		Yes	Yes

\* Distances measured on site.

D0.3	24.07.19	PAGE SIZE CHANGED FROM A3 TO A1	JL	SKT	SKT
D0.2	12.06.19	ORDER LIMITS UPDATED	JL	SKT	SKT
D.01		FIRST ISSUE			
REV	DATE	DESCRIPTION	BY	CHK	APP

REVISIONS

CLIENT

PROJECT

EAST ANGLIA TWO

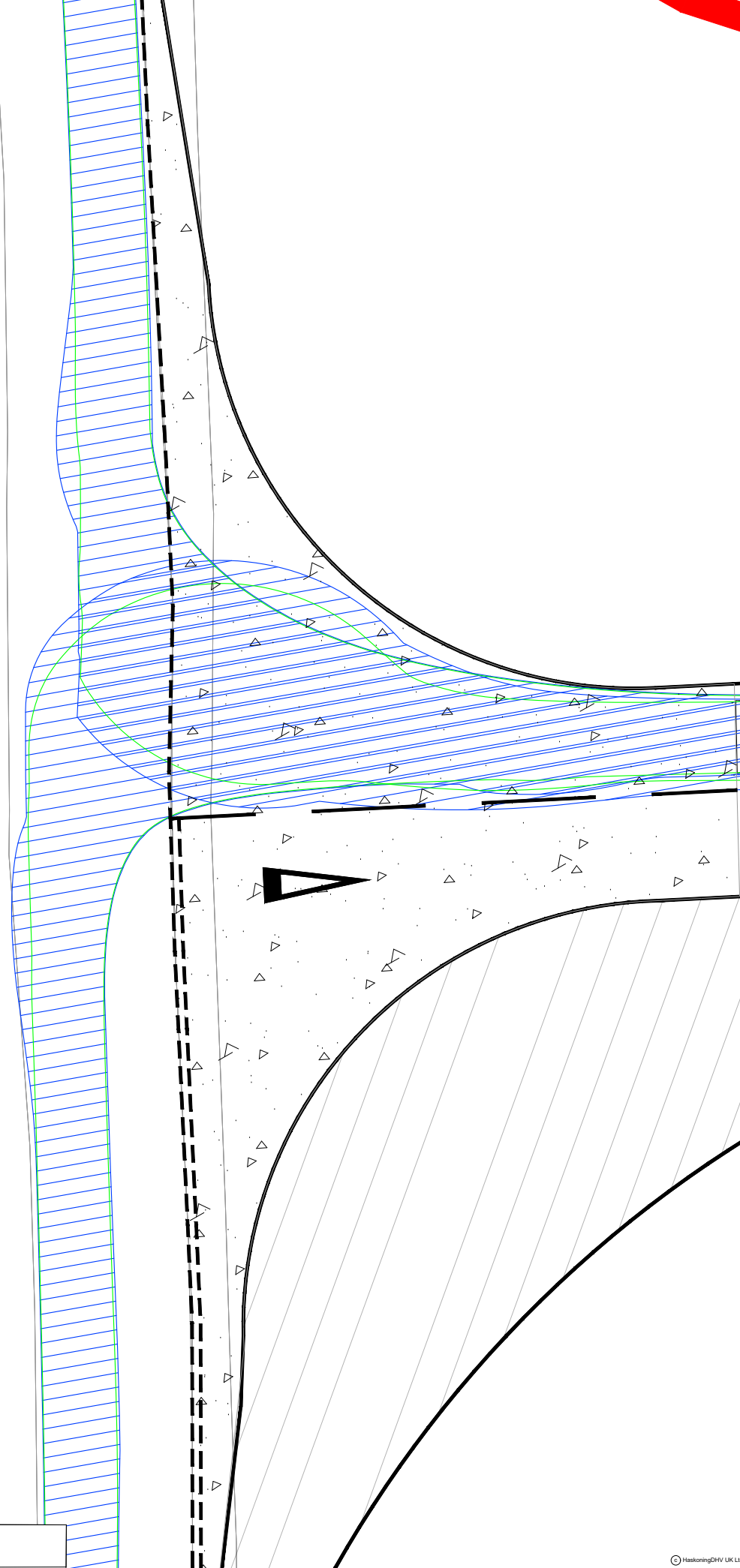
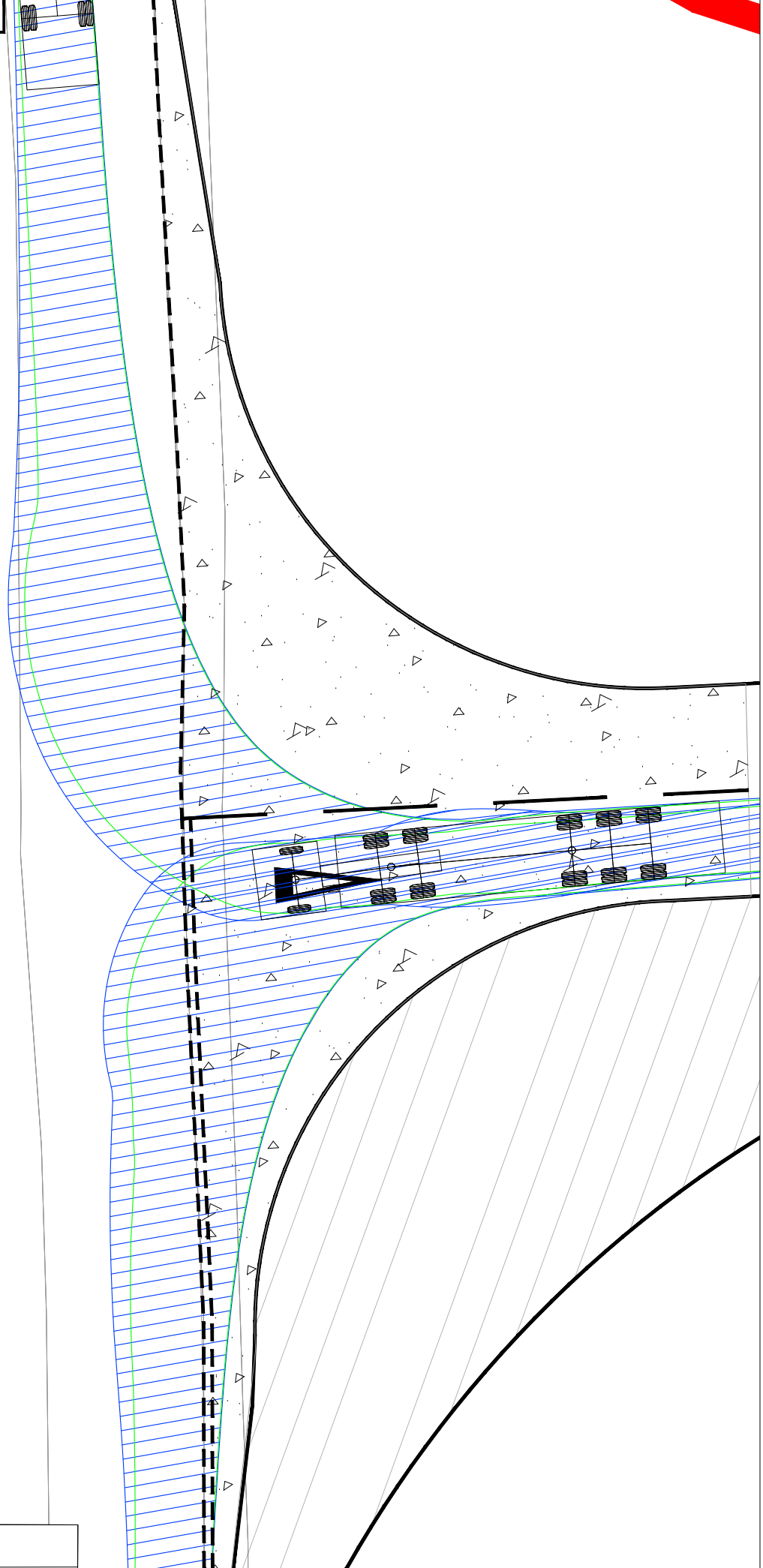
TITLE

ACCESS 13  
B1121  
OPERATIONAL PHASE

Enterprise House,  
Delta Way, Egham,  
Surrey, TW20 8RX  
Tel +44(0)1832 569566  
www.royalhaskoningdhv.com

DRAWN	JL	CHECKED	ST	APPROVED	ADR
DATE	13.11.18	SCALE AT A3	VARIABLE	AUTOCAD REF.	
DRAWING No	TP-PB4842-DR021				REVISION
CLIENT DWG No.					D0.3





**NOTES**  
1. Do not scale from this drawing, all dimensions are in metres unless noted otherwise.  
2. This drawing has been based upon Ordnance Survey Maps and Royal HaskoningDHV can not guarantee the accuracy of data.

**KEY**

- ORDER LIMITS
- PROPOSED ACCESS BOUNDARY/ROAD MARKINGS
- FULL DEPTH CARRIAGEWAY CONSTRUCTION WITH BOUND SURFACE

**VEHICLE TRACKING**

Max Legal Length (UK) Articulated Vehicle (16.5m)  
Overall Length 16.50m  
Overall Width 2.55m  
Overall Body Height 3.58m  
Min Body Ground Clearance 0.41m  
Max Track Width 2.50m  
Lock to lock time 6.00s  
Kerb to Kerb Turning Radius 6.55m

VEHICLE BODY SWEEP PATH (FORWARD GEAR)  
VEHICLE CHASSIS SWEEP PATH

D0.3	24.07.19	DRAWING TITLE AMENDED	JL	SKT	SKT
D0.2	12.06.19	ORDER LIMITS UPDATED	JL	SKT	SKT
D.01		FIRST ISSUE			
REV	DATE	DESCRIPTION	BY	CHK	APP

REVISIONS

CLIENT

PROJECT

EAST ANGLIA TWO

TITLE

ACCESS 13  
B1121  
MAX ARTICULATED HGV  
SWEPT PATH ANALYSIS

Royal HaskoningDHV  
Enhancing Society Together

Enterprise House,  
Delta Way, Egham,  
Surrey, TW20 8RX  
Tel +44(0)1832 569566  
www.royalhaskoningdhv.com

DRAWN	JL	CHECKED	SKT	APPROVED	ADR
DATE	13.11.18	SCALE AT A3	1:200	AUTOCAD REF.	
DRAWING No.	TP-PB4842-DR022	REVISION			D0.3
CLIENT DWG No.					